

SeekTake

A Whisker client

by Rudolf Cardinal

www.whiskercontrol.com

Copyright (C) Cambridge University Technical Services Ltd.

Distributed by Campden Instruments Ltd (www.campden-inst.com)



SeekTake

© Cambridge University Technical Services Ltd

All rights reserved. No parts of this work may be reproduced in any form or by any means - graphic, electronic, or mechanical, including photocopying, recording, taping, or information storage and retrieval systems - without the written permission of the publisher.

Products that are referred to in this document may be either trademarks and/or registered trademarks of the respective owners. The publisher and the author make no claim to these trademarks.

While every precaution has been taken in the preparation of this document, the publisher and the author assume no responsibility for errors or omissions, or for damages resulting from the use of information contained in this document or from the use of programs and source code that may accompany it. In no event shall the publisher and the author be liable for any loss of profit or any other commercial damage caused or alleged to have been caused directly or indirectly by this document.

Printed: March 2024 in Cambridge, UK

Creator (Whisker)

Rudolf N. Cardinal

Design and Programming (Whisker)

Rudolf N. Cardinal

Michael R. F. Aitken

Legal Advisor (CUTS)

Adjoa D. Tamakloe

Sales (Campden)

Julie Gill

Contacting the authors:

For information about Whisker, visit <http://www.whiskercontrol.com/>.

If you have sales enquiries about Whisker, contact Campden Instruments Ltd at <http://www.campden-inst.com/>.

If you have comments or technical enquiries that cannot be answered by the sales team, contact the authors:

Rudolf Cardinal (rudolf@pobox.com)

Mike Aitken (m.aitken@psychol.cam.ac.uk)

Table of Contents

Foreword	1
Part I SeekTakeShock	2
1 About SeekTakeShock	2
2 Required devices	2
3 Using the task	4
4 Parameters dialogs	6
5 Seek Take Task	8
Index	12

Foreword

WARNING

Whisker is a system designed for research purposes only, and should never be used to control medical apparatus or other devices that could endanger human life.

DISCLAIMER

The authors, copyright holders, and distributors disclaim all responsibility for any adverse effects that may occur as a result of a user disregarding the above warning.

1 SeekTakeShock

1.1 About SeekTakeShock

Purpose

Concurrent Nosepoke VI for food and Seeking-Taking task for drug, with optional contingent shock and CS presentations.

Software requirements

Requires Whisker v 2.4 or greater.

Data storage

- Text-based output to disk.
- ODBC data storage to a database (supplied).

Task Design

Tony Dickinson, Barry Everitt, Pat Di Ciano and Mike Aitken.
Amendment to task for version 3.1 in consultation with Yann Peloux.

Authors

Mike Aitken (m.aitken@psychol.cam.ac.uk), although most of it was stolen from SeekTake, by Rudolf Cardinal (rudolf@pobox.com)!

Copyright

Copyright © Cambridge University Technical Services Ltd

Sample articles using this or similar tasks

Standard SeekTake task:

- Olmstead MC, Parkinson JA, Miles FJ, Everitt BJ, Dickinson A (2000). Cocaine-seeking by rats: regulation, reinforcement and activation. *Psychopharmacology* 152: 123–131 [<http://link.springer.de/link/service/journals/00213/papers/0152002/01520123.pdf>]

Version history

See version_tracker.txt

1.2 Required devices

The program requires to claim devices in groups named **box0**, **box1**, **box2...** with device names as listed below in bold:

```
// Names of lines the program expects to be able to claim
NOSEPOKE           // input
LEFTLEVER        // input
RIGHTLEVER       // input
LOCOBEAM_FRONT  // input
LOCOBEAM_MIDDLE // input
```

```
LOCOBEAM_REAR      // input
HOUSELIGHT         // output
PUMP               // output
DIPPER             // output
LEFTLEVERCONTROL   // output
RIGHTLEVERCONTROL  // output
LEFTLIGHT          // output
RIGHTLIGHT         // output
CENTRELIGHT        // output
PELLET             // output
TONE               // output
SHOCK              // output
```

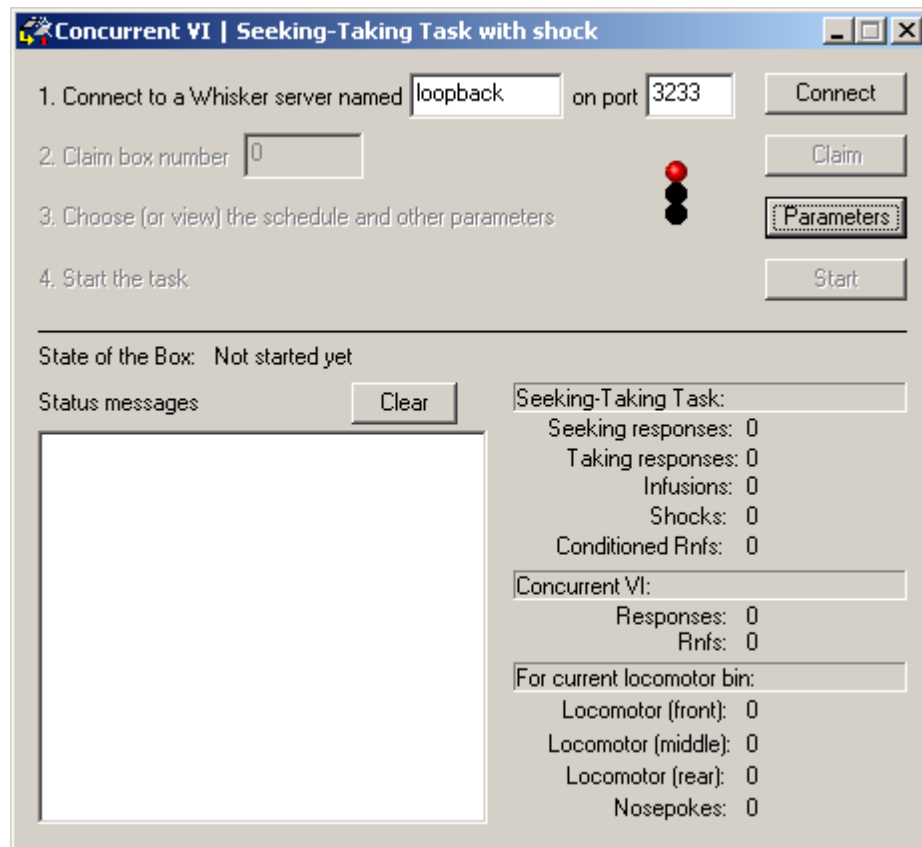
// Aliases used while the program is in full flight, which it therefore expects **not** to be present on the server:

```
SeekingLever
SeekingLeverControl
OtherLight
TakingLever
TakingLeverControl
Stimulus
NoncontingentCS
PIT_CS
```

Please ensure that these devices are available and listed in the device definition file in use by the server.

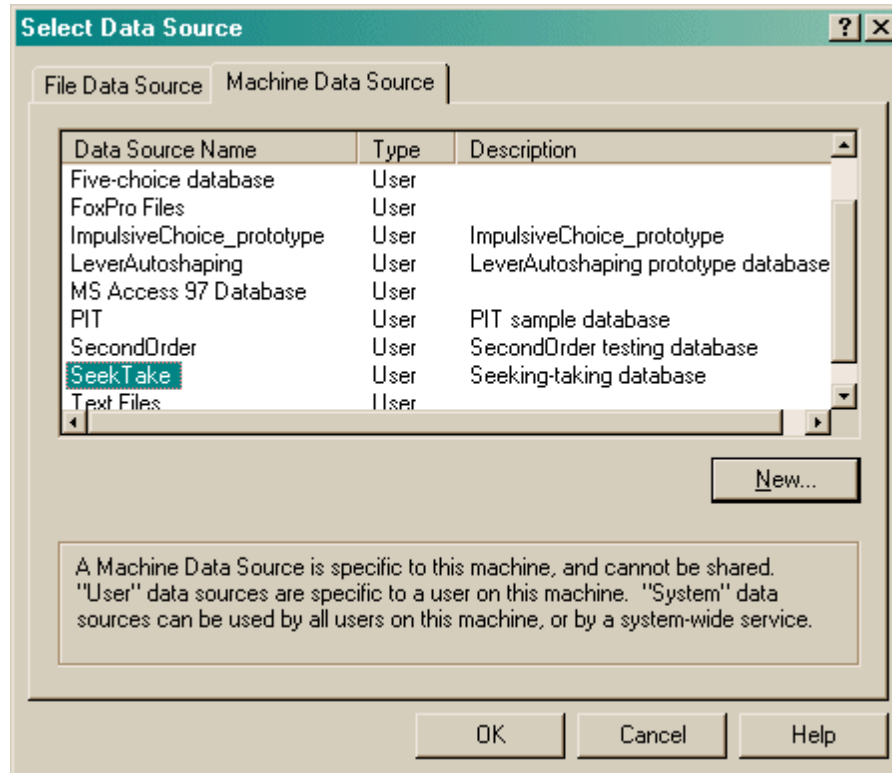
1.3 Using the task

When you run the task, the main screen looks as follows:



You must connect to a Whisker server, claim an operant chamber (box), and set up the [parameters](#) for your task. Once that's done, the traffic lights will turn amber. When you are ready, press *Start* to begin the task.

When the task finishes, it saves data to disk and pops up a new dialogue box for you to select a database to store the data to. (The data sources are configured under *Control Panel* → *ODBC*.) If you previously specified an ODBC data source in the parameters, that data source is used automatically and you will only see a dialogue box (like the ones below, Windows 2000 or XP respectively) if something goes wrong and the program needs your input.



1.4 Parameters dialogs

The parameters dialogue box looks like this:

Set parameters for the Seeking-Taking Task

Subject details
 Load config Rat ID: xxx Session number: 1
 Save config Comment: <generated automatically>

Database ID
 Database ID: _____
 Data Source name, as set in ODBC control panel, or blank to choose at end of session.
 Pick Cancel

Data recording
 Summary Response

NOSEPOKE VI OPTIONS
 VI ACTIVE Mean VI (sec) 60
 REINFORCER: Dipper Pellets

REINFORCER SETTINGS
 PUMP Infusion duration (s): 7.28
 DIPPER # dips: 1 Dip time (s): 5 Inter-dip time (s): 1 Down at rest
 PELLET # pellets: 1 Pulse length (ms): 45 Time between pellets (s): 0.5

SEEK-TAKE OPTIONS
 SEEKING-TAKING TASK ACTIVE Lever assignment: Seeking LEFT, taking right Seeking RIGHT, taking left
 REINFORCER: Pump (normal) Dipper Pellets
 Rnf-associated CS: Light over taking lever Centre light Light over seeking lever (abnormal)
 Additional CS: Light over taking lever Centre light Light over seeking lever (abnormal)
 Number of non-shocked cycles (Max rnf if no shocks: 0 = no limit): 20

SEEK-TAKE SCHEDULE
 PRIMING event Prime all cycles Prime randomized in pairs Prime alternate cycles First cycle IS primed
 Completely NONCONTINGENT stimulus, comprising: Priming CS Taking lever Reinforcement (as above)
 Stimulus duration (s) (N.B. reinf. duration as above): 7 Time from START of stim. to START of next phase (s): 10
 Response on taking lever required. Present CS with lever Reinforce press
 Present CS after response, for 0 s. Wait 10 s after response before starting next phase.
 SEEKING lever FR VR FI RI RT Parameter: 30 s 0
 TAKING lever FR VR FI RI RT Parameter: 1 0
 REINFORCER accompanied by CS (see above), and with the houselight off. TIMEOUT of 6 min before cycle restarts
 GIVE SHOCK Settings for Shock... GIVE EXTRA CSs Settings for additional CS...
 Session time limit (min) (0 for no limit): 180 Session delimited by cycles if using shock Locomotor recording bin size (min): 10

Subject details and Config files

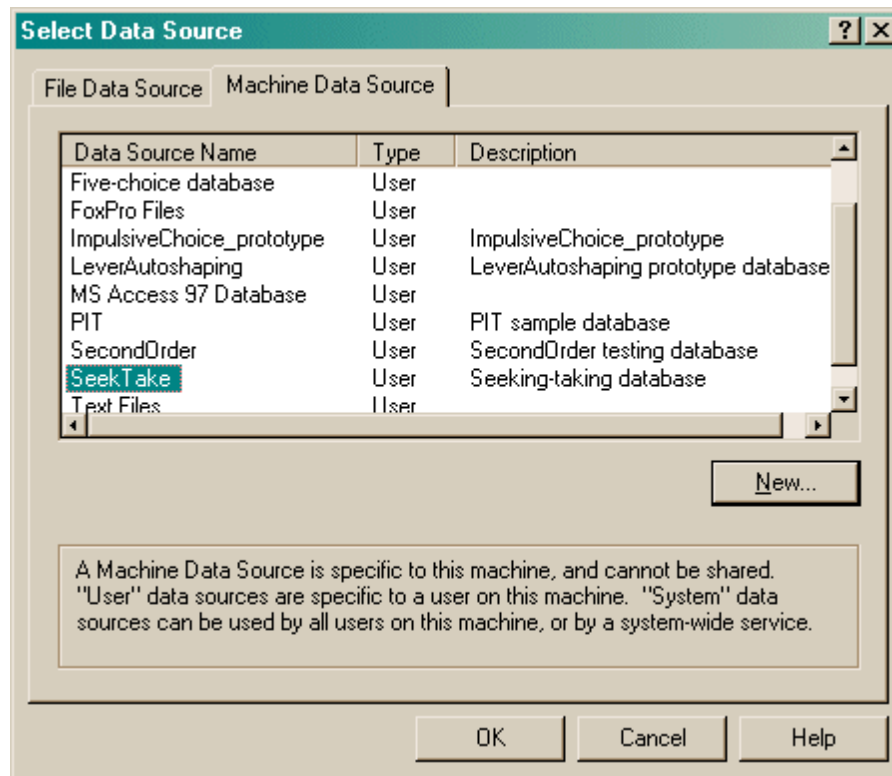
These allow the rapid storing and loading of parameter sets. The session number is automatically incremented by one when a configuration is loaded.

Data Recording

These buttons allow the manual selection of files for storing of the detailed and summary data generated in the session

Database ID

To pick an ODBC database **in advance** of finishing, click *Pick* and you will be offered the ODBC Data Source picker (below). Your choice will be recorded and will apply to this subject from now on (or until you specify a different source).



If you don't specify an ODBC data source now, or you delete the value in the "ODBC data source name" box, you'll be asked to choose when the task ends (and that choice will only apply to the session in progress).

NosePoke VI

Here you can set the length of an RI for nosepoke -> Rnf to run concurrently, and independently of the Seek-Take cycles.

- Note that only the nutritive reinforcers (Pellet or Dipper) can be used with the concurrent nosepoke VI.

Reinforcer settings

Here you can set the nature of the stimulus event for each of the three appetitive reinforcers.

- As of v.3.1, nutritive reinforcers can also be used with the Seek-Take schedule, unless the concurrent VI is active.
- When both VI and the Seeking-Taking task are active, the Seek-Take reinforcer **must be the pump**.

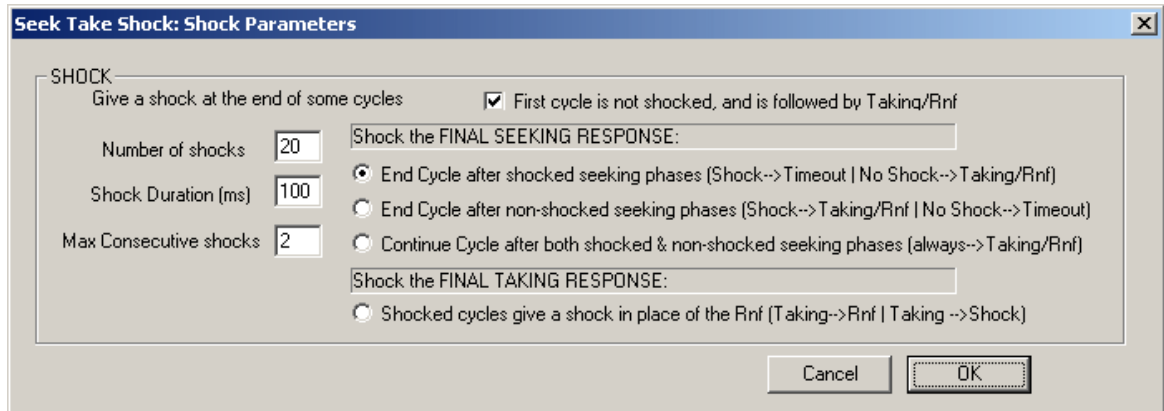
Seek-Take Options, Seek-Take Schedule, Additional CS

See the [help for original SeekTake](#) for more details on the structure of the task, and the additional CS options.

The only new option (not in Seek Take) is the RT option, added in v. 3.1.9 for a non-contingent Random Time schedule. This makes the Seeking / Taking schedule proceed on an RT schedule with is implemented in the same manner as the RI, except that (1) the interval starts immediately (not on first response) and (2) the next phase (Taking / Shocking / Rnf) occurs immediately at the end of the interval.

Shock Options

Options for the delivery of shocks are set with the following dialog:



If the **shocks** are used:

- Trials are divided conceptually into 2 types: shocked and non-shocked.
- The number of each trial type is specified separately (session cannot be scheduled as time delimited)
- These are randomly interleaved over the session, with the proviso that no more than 2 successive cycles are shocked.

When to shock

When a cycle is shocked, it can either be at the end of the seeking phase, or at the end of the taking phase.

When seeking phases are shocked, you can choose to schedule a taking phase of the cycle:

- Only after unshocked cycles (top option). This results in a mix of 'punished' and 'drug' cycles.
- Only after unshocked cycles (second option). This results in a mix of 'extinction' and 'conflict' (drug + shock) cycles.
- After all cycles (bottom option). This results in a mix of 'conflict' and 'drug' cycles.

When taking phases are shocked (bottom option), the shock ends the cycle. This results in a mix of seek->take->drug and seek->take->shock trials.

The taking phase on *all* cycles (including the first) is governed by the settings in 'Taking lever' parameters on the main parameters.

It is possible to ensure that the first cycle is **never** a shocked cycle, if desired (this was the behaviour of all shock versions before 3.1.9).

Any questions, give me a shout.

Version 3.1.9

Mike Aitken, August 2006

1.5 Seek Take Task

The task cycles through four basic phases:

1. responding on the **SEEKING** lever (seeking lever present; taking lever absent; houselight on)
2. responding on the **TAKING** lever (seeking lever absent; taking lever present; houselight on)
3. delivery of **REINFORCEMENT** (seeking lever absent; taking lever absent; houselight off; reinforcer-associated stimulus on)
4. **TIMEOUT** (seeking lever absent; taking lever absent; houselight on)

Once one phase is complete, the next begins (unless disabled, in which case it is skipped over).

The schedules for the seeking and taking levers can be varied.

To this basic task, various complex extras can be added:

- A **PRIMING** event can begin one or more cycles (think of this as phase 0). This priming event can include a priming/noncontingent stimulus (possibly different from the reinforcer-associated stimulus), noncontingent reinforcement, and/or presentation of the taking lever (with or without the requirement to respond, and with or without the option to reinforce the response either with a stimulus or primary reinforcement). The dialogue box below details all these options more clearly.
- The seeking phase can be accompanied by presentation of a third type of stimulus, known as the **PIT (Pavlovian-instrumental transfer)** stimulus, on some or all seeking cycles.
- **Noncontingent stimuli** can be presented, desynchronized with the main seeking/taking cycle. Exceptionally, the task can be run with no levers but still presenting these noncontingent stimuli, which makes the task completely noncontingent (Pavlovian). **Note: see below for a safety warning if you allow the task to give reinforcement with no levers present (i.e. noncontingent reinforcement).**

The task cycles through four basic phases:

1. responding on the **SEEKING** lever (seeking lever present; taking lever absent; houselight on)
2. responding on the **TAKING** lever (seeking lever absent; taking lever present; houselight on)
3. delivery of **REINFORCEMENT** (seeking lever absent; taking lever absent; houselight off; reinforcer-associated stimulus on)
4. **TIMEOUT** (seeking lever absent; taking lever absent; houselight on)

Once one phase is complete, the next begins (unless disabled, in which case it is skipped over).

The schedules for the seeking and taking levers can be varied.

To this basic task, various complex extras can be added:

- A **PRIMING** event can begin one or more cycles (think of this as phase 0). This priming event can include a priming/noncontingent stimulus (possibly different from the reinforcer-associated stimulus), noncontingent reinforcement, and/or presentation of the taking lever (with or without the requirement to respond, and with or without the option to reinforce the response either with a stimulus or primary reinforcement). The dialogue box below details all these options more clearly.
- The seeking phase can be accompanied by presentation of a third type of stimulus, known as the **PIT (Pavlovian-instrumental transfer)** stimulus, on some or all seeking cycles.
- **Noncontingent stimuli** can be presented, desynchronized with the main seeking/taking cycle. Exceptionally, the task can be run with no levers but still presenting these noncontingent stimuli, which makes the task completely noncontingent (Pavlovian). **Note: see below for a safety warning if you allow the task to give reinforcement with no levers present (i.e. noncontingent reinforcement).**

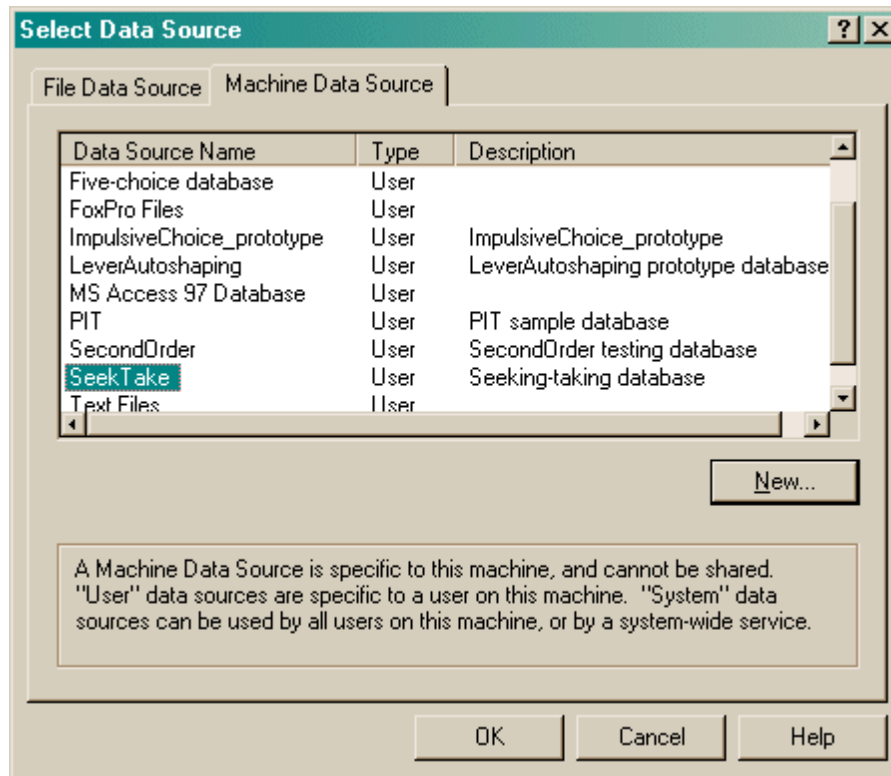
Be careful if you use the houselight as part of a CS; this is not necessarily advised, because it is possible that (for example) a noncontingent CS finishes during a cycle and switches the houselight off as it finishes, leaving the task in the Seeking state but with the houselight off (which is not normal).

Click one of the four "Quick schedule config" buttons to set up standard schedule configurations, or edit the schedule directly.

The **Ext-Timeout** and **FR1-Timeout** are extinction and FR1 schedules, respectively, with the

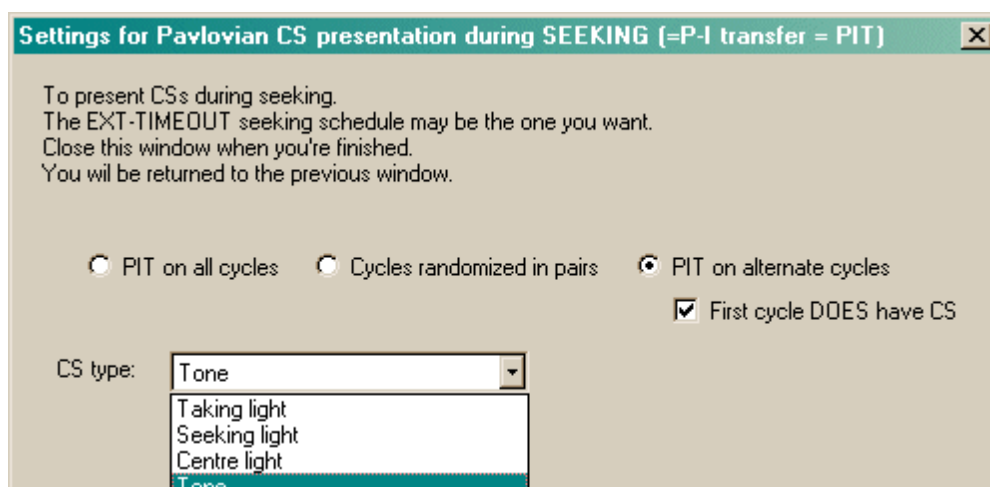
additional feature that the schedule automatically terminates after a specified time (at which point, the next enabled "component" [e.g. taking lever, reinforcer, timeout] takes over.)

To pick an ODBC database **in advance** of finishing, click *Pick* and you will be offered the ODBC Data Source picker (below). Your choice will be recorded and will apply to this subject from now on (or until you specify a different source).



If you don't specify an ODBC data source now, or you delete the value in the "ODBC data source name" box, you'll be asked to choose when the task ends (and that choice will only apply to the session in progress).

To present **noncontingent CSs during seeking (Pavlovian-instrumental transfer, or PIT)**, enable the tick-box labelled "PIT" in the "Seeking" line and click the "PIT" button to set options.



To give **desynchronized noncontingent CSs independent of the seeking/taking cycle**, enable

"Give desynchronized noncontingent CSs" and click "Settings for desync. CS presentation":

Settings for DESYNCHRONIZED noncontingent CS presentation

CS presentation that is unrelated to the seeking-taking cycles
The devices used as the CS were specified in the previous window (PRIMING/NONCONTINGENT STIMULUS).
Close this window when you're finished.
You will be returned to the previous window.

The session starts.

Wait for to minutes before delivering any noncontingent CSs.

A cycle of CS delivery begins. Within each cycle, deliver CSs, each lasting sec.
with a gap of sec between each CS.

Wait for to minutes before beginning the next cycle.

In total, deliver cycles in this fashion.

Allow session to run with no levers (up to the session time limit)

The final option in this dialogue box allows you to run without the seeking or taking levers - allowing a predefined session length and the presentation of noncontingent CSs only. Note that **it is imperative that you check the reinforcement parameters** in this situation. For example, setting this combination - seeking OFF, taking OFF [a combination ordinarily disallowed but allowed if you are giving desynchronized noncontingent CSs and have ticked the "allow no levers" option], **reinforcement ON**, timeout ON with a short timeout - would deliver reinforcer after reinforcer (since the task cycles through: skip seeking -> skip taking -> give reinforcement -> timeout -> restart cycle again). **The program disallows "seeking OFF, taking OFF, reinforcement ON" unless a timeout is specified, but short timeouts would still be dangerous if IV reinforcement is used.**

- In general, if you tick the "allow session to run with no levers" box, you must check very carefully what happens - although well defined, the program's behaviour may be counter-intuitive. **Caveat emptor.**

Index

- S -

SeekTake

- parameters 6
- required devices 2
- using 4