

LeverAutoshaping

A Whisker client

by Rudolf Cardinal

www.whiskercontrol.com

Copyright (C) Cambridge University Technical Services Ltd.

Distributed by Campden Instruments Ltd (www.campden-inst.com)



LeverAutoshaping

© Cambridge University Technical Services Ltd

All rights reserved. No parts of this work may be reproduced in any form or by any means - graphic, electronic, or mechanical, including photocopying, recording, taping, or information storage and retrieval systems - without the written permission of the publisher.

Products that are referred to in this document may be either trademarks and/or registered trademarks of the respective owners. The publisher and the author make no claim to these trademarks.

While every precaution has been taken in the preparation of this document, the publisher and the author assume no responsibility for errors or omissions, or for damages resulting from the use of information contained in this document or from the use of programs and source code that may accompany it. In no event shall the publisher and the author be liable for any loss of profit or any other commercial damage caused or alleged to have been caused directly or indirectly by this document.

Printed: March 2024 in Cambridge, UK

Creator (Whisker)

Rudolf N. Cardinal

Design and Programming (Whisker)

Rudolf N. Cardinal

Michael R. F. Aitken

Legal Advisor (CUTS)

Adjoa D. Tamakloe

Sales (Campden)

Julie Gill

Contacting the authors:

For information about Whisker, visit <http://www.whiskercontrol.com/>.

If you have sales enquiries about Whisker, contact Campden Instruments Ltd at <http://www.campden-inst.com/>.

If you have comments or technical enquiries that cannot be answered by the sales team, contact the authors:

Rudolf Cardinal (rudolf@pobox.com)

Mike Aitken (m.aitken@psychol.cam.ac.uk)

Table of Contents

Foreword	1
Part I LeverAutoshaping	2
1 About LeverAutoshaping	2
2 Required devices	2
3 Using the task	3
4 Parameters	5
Index	7

Foreword

WARNING

Whisker is a system designed for research purposes only, and should never be used to control medical apparatus or other devices that could endanger human life.

DISCLAIMER

The authors, copyright holders, and distributors disclaim all responsibility for any adverse effects that may occur as a result of a user disregarding the above warning.

1 LeverAutoshaping

1.1 About LeverAutoshaping

Purpose

Autoshaping using levers as the CS.

Software requirements

Requires Whisker v2.0 or greater.

Data storage

- Text-based output to disk.
- ODBC data storage to a database (supplied).

Author

Rudolf Cardinal (rudolf@pobox.com).

Copyright

Copyright © Cambridge University Technical Services Ltd

1.2 Required devices

The program requires to claim devices in groups named **box0**, **box1**, **box2...** with device names as listed below in bold:

```
// Names of lines the program expects to be able to claim
NOSEPOKE           // input
LEFTLEVER         // input
RIGHTLEVER        // input
LOCOBEAM_FRONT    // input
LOCOBEAM_MIDDLE   // input
LOCOBEAM_REAR     // input
HOUSELIGHT        // output
PUMP              // output
DIPPER            // output
LEFTLEVERCONTROL // output
RIGHTLEVERCONTROL // output
LEFTLIGHT         // output
RIGHTLIGHT        // output
PELLET            // output
```

```
// Aliases used while the program is in full flight, which it therefore expects
not to be present on the server:
```

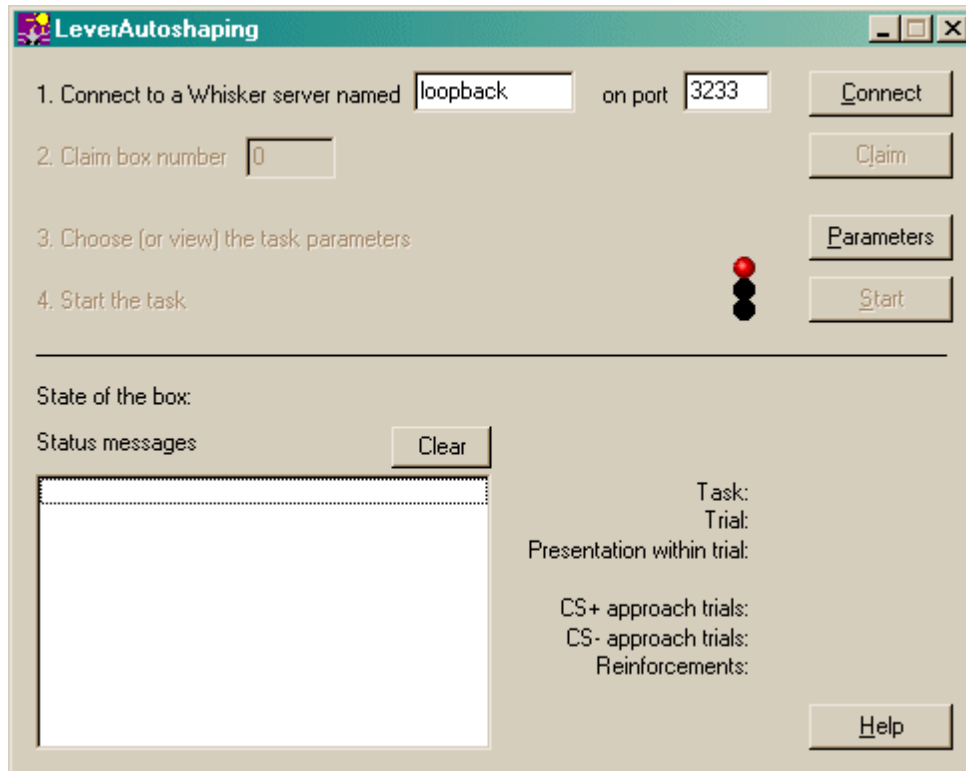
```
PlusLever
PlusLeverControl
PlusLight
MinusLever
MinusLeverControl
MinusLight
```

Please ensure that these devices are available and listed in the device definition file in use by the

server.

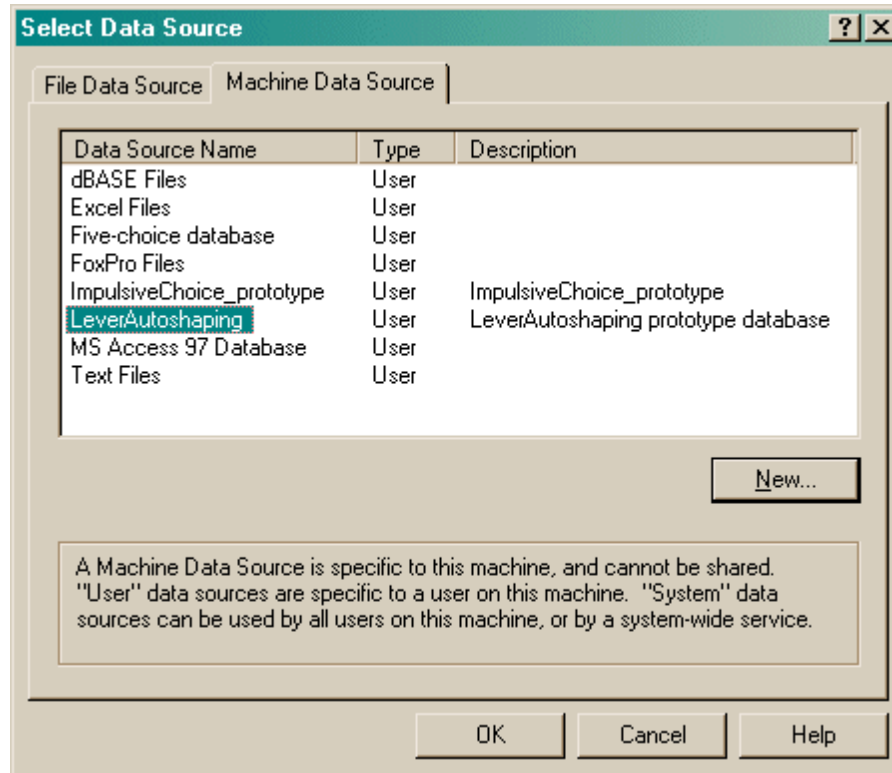
1.3 Using the task

When you run the task, the main screen looks as follows:



You must connect to a Whisker server, claim an operant chamber (box), and set up the [parameters](#) for your task. Once that's done, the traffic lights will turn amber. When you are ready, press *Start* to begin the task.

When the task finishes, it saves data to disk and pops up a new dialogue box for you to select a database to store the data to. (The data sources are configured under *Control Panel* → *ODBC*.) If you previously specified an ODBC data source in the parameters, that data source is used automatically and you will only see a dialogue box if something goes wrong and the program needs your input.



1.4 Parameters

The parameters dialogue box looks like this:

Set parameters for LeverAutoshaping

Subject details

Rat ID: Session number:
 Comment:

Data recording

xxx-04Sep2002-1408-LeverAutoshaping-summary.txt
ODBC data source name (see Control Panel). Blank to choose later:

Reinforcer

Pump - Infusion duration (s):
 Dipper - # dips: Dip time (s): Inter-dip time (s): Down at rest
 Pellets - # pellets: Pulse length (ms): Time between pellets (s):

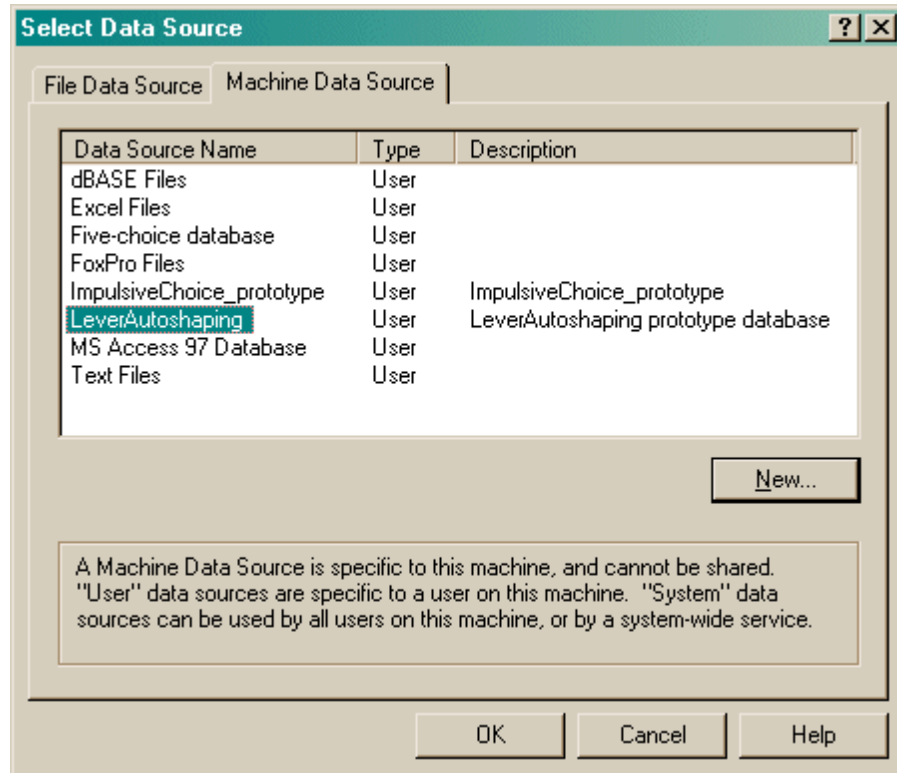
Autoshaping settings

TASK TYPE: Autoshaping Omission Probe
CS+ SIDE: left right
TRIGGER STIMULUS: on nosepoke on rear locomotor beambreak
 on completion of VI, regardless of where the subject is
STIMULUS IS: lever presentation light above lever (with levers present all the time)
 lever + light combination
Stimulus duration (s): Post-reinforcement timeout (s):
VI minimum (s): VI maximum (s): Houelight on during task

THIS SESSION

Give trials, starting with trial number

To pick an ODBC database **in advance** of finishing, click *Pick* and you will be offered the ODBC Data Source picker (below). Your choice will be recorded and will apply to this subject from now on (or until you specify a different source).



If you don't specify an ODBC data source now, or you delete the value in the "ODBC data source name" box, you'll be asked to choose when the task ends (and that choice will only apply to the session in progress).

Index

- L -

LeverAutoshaping
 about 2
 parameters 5
 required devices 2
 using 3